

NEWSLETTER

MAR 1, 2025

Market Sense

Nuclear Energy Theme in Dashboard



Dashboard



Indicators on TradingView



Realtime Alerts



Discussion Group



Watch Pro-Setups Intro Video



www.pro-setups.com



@ProSetups_

Nifty500



Weekly Market Update - New Lower Low

This week, the Indian stock market continued its downward trend, with the **Nifty 500 declining by approximately 4%** and forming a new lower low. The reasons for this fall remain consistent with previous weeks, reflecting ongoing challenges in both domestic and global markets.

Despite the decline, **valuations are becoming more attractive**, offering opportunities for value investors to acquire fundamentally strong businesses at better prices. Our **Financial Insights tool can help** assess how much growth your portfolio companies need to get your desired return.

For traders, caution is advised. Until 50EMA trends upwards which signals a safer environment for trading, limiting trading activity or using tight stops and modest profit targets is prudent. Nifty 500's 10EMA crossover above its 20EMA will give us the first cues. **Temporary rebounds** due to oversold conditions are possible, but the **market remains a sell-on-rise** scenario. The key focus should be on reclaiming the declining 50EMA. The first positive cues will come from the 10EMA crossing above the 20EMA. Overall, caution remains essential.

Lastly, don't forget to check the Note on **Nuclear Energy** theme in our **Dashboard**.

Market Breadth

1 Jan 2024 - 1 Mar 2025

Percent stocks over 10/30/50 Day Moving Averages (EMAs)

% above 10EMA 28 Feb 2025 7%

% above 30EMA 28 Feb 2025 5%

% above 50EMA 28 Feb 2025 5%

[Click here to know more about Market Breadth](#)

% of Companies with DCR

DCR Range	27 Feb 2025	28 Feb 2025
< 30%	62	48
30% - 70%	29	35
> 70%	8	14

No. of Companies with Pocket Pivot Volumes

Date	No. of Companies
Feb 24	37
Feb 25	37
Feb 27	36
Feb 28	59

Nifty 500: 10EMA over 20EMA? ● Curtail

Recent Crossback Dates:

Date	Indicator
23 Dec 2024	Crossunder
3 Dec 2024	Crossover
7 Oct 2024	Crossunder
19 Aug 2024	Crossover
8 Aug 2024	Crossunder
14 May 2024	Crossover

Crossover of 10EMA over 20EMA is a positive indicator for starting LONG positions again, while crossunder is a cautionary sign to cut LONG positions.
● dot favors staying LONG, while ● dot favors curtailing Long positions.

Number of stocks with percentage change over 3%

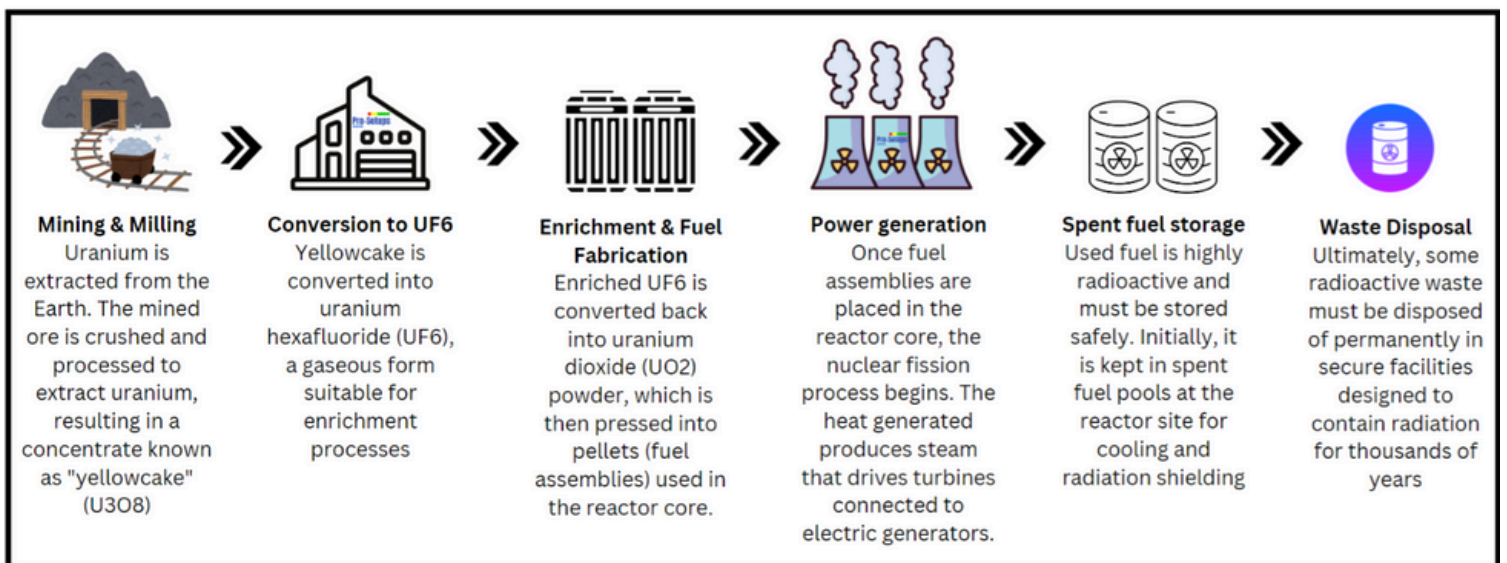
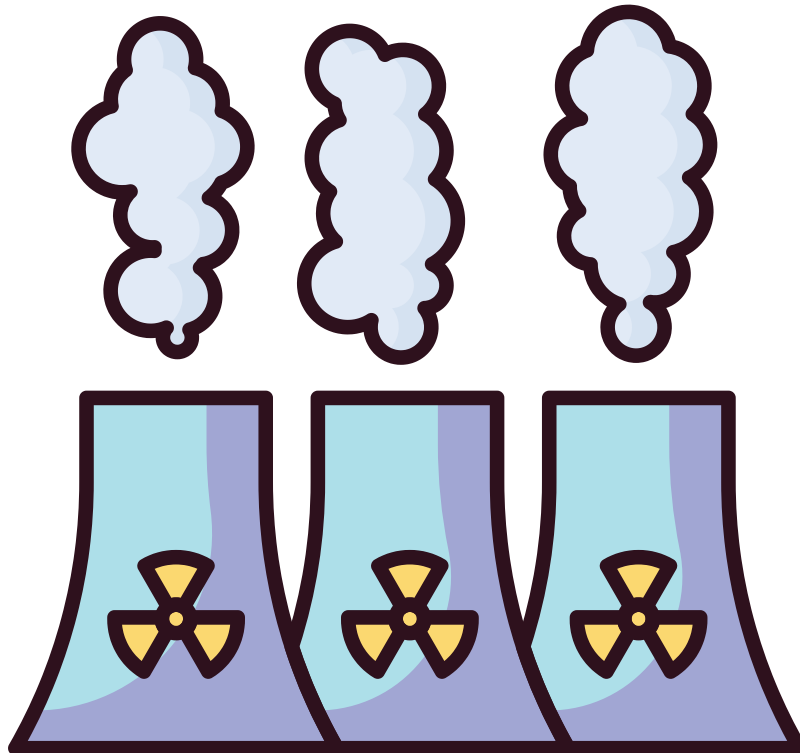
Date	No. of Cos.	>3%	<3%	% >3%	% <3%
28 Feb 2025	1,618	39	772	2%	48%
27 Feb 2025	1,626	46	587	3%	36%
25 Feb 2025	1,636	89	124	5%	8%
24 Feb 2025	1,634	51	293	3%	18%
21 Feb 2025	1,637	111	173	7%	11%
20 Feb 2025	1,639	394	37	24%	2%
19 Feb 2025	1,629	633	61	39%	4%
18 Feb 2025	1,618	67	646	4%	40%

The market breadth is **extremely oversold** once again and calls for a bounce. The number of stocks with pocket pivot candles were higher on the last day of the week, when the market made new Lower Low, which is a short-term positive. But like previous ones, the said expected bounce should be treated as a short-term only, until we reclaim 50EMA. (For reference: we consider the market to be in the oversold zone when all three key EMAs touch the green line at the bottom.)

Nuclear Energy

As India embarks on an ambitious journey to **triple its nuclear power capacity by 2031-32**, the sector is poised for unprecedented growth. With a vision to reach over **100 GW by 2047**, nuclear energy is set to play a pivotal role in India's clean energy transition. This transformation presents a compelling opportunity for investors and stakeholders alike.

This week, we have covered nuclear energy theme in our Pro-Setups Dashboard and companies that can stand to benefit from it. To understand the **Nuclear Energy** theme, including a look at key companies, explore our dedicated page in the Pro-Setups Dashboard (*subscribers only*).



This Pro-Setups Newsletter has been prepared by **Shivpuns Analytics Private Limited** (hereinafter referred to as 'SAPL') and is meant for sole use by the recipient(s) and not for circulation.

No part of the Newsletter may be copied or duplicated in any form by any means or redistributed without the written consent of SAPL.


The stocks mentioned in the Newsletter are not to be considered as recommendations. The recipient must do his own diligence and analysis in buying or selling the stocks mentioned in the Newsletter. The recipient is requested to take into consideration all the risk factors including their financial condition, suitability to risk return profile and the like and take professional advice before investing. Investments in securities market are subject to market risks, and recipients are requested to read all the related documents carefully before investing. Derivatives (i.e. Futures & Options) are sophisticated investment device and its trading involves substantial risk & leverage and is not appropriate for all investors. The investor is requested to take into consideration all the risk factors before actually trading in derivative contracts.

As investors ourselves, we may have positions in some of the stocks.

The Newsletter should be read and relied upon at the sole discretion and risk of the recipient. If you are dissatisfied with the contents of the Newsletter or with the terms of this Disclaimer, you should unsubscribe from the website www.pro-setups.com by sending an email to puneet@pro-setups.com. SAPL shall not be responsible or liable in any manner, directly or indirectly, for the losses or the damages sustained due to the investments made or not made, or any action taken or not taken, on basis of the Newsletter, including but not restricted to, fluctuation in the prices of shares, derivatives and bonds, changes in the currency rates, diminution in the NAVs, reduction in the dividend or income, lost profits, or lost opportunity etc. SAPL also assumes no responsibility for the improper or delayed functioning of the external website(s) or software(s) (such as www.tradingview.com) for which the access may have been given to the recipient.

The Newsletter is not directed to, or intended for distribution to or use by, any person or entity who is a citizen or resident or located in any locality, state, country or other jurisdiction where such distribution, publication, reproduction, availability or use would be contrary to law or regulation or what would subject SAPL or its affiliates to any registration or licensing requirement within such jurisdiction. If the Newsletter is inadvertently sent or has reached any individual in such country, especially, United States of America, the same may be ignored and brought to the attention of the sender.

Contact:

 www.pro-setups.com

 puneet@pro-setups.com

 [@ProSetups_](#)

 [Join ProSetupsChannel](#)